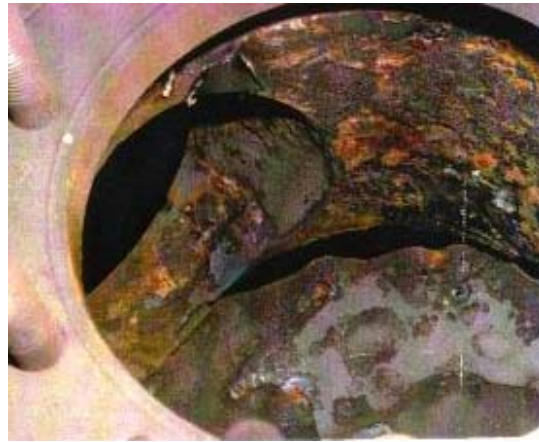




Worldwide repairs carried out with PolymerMetal®

REP-# 034



Repair of a three-way valve housing for sea water. Material: grey cast iron. Damage: considerable wash-outs as well as a gaping hole in the valve housing. The repair was carried out with MM-metal SS-steelceramic and Hardener yellow and Ceramium, liquid with Hardener CE.

**MultiMetal**  
the MetalExistenceCompany®